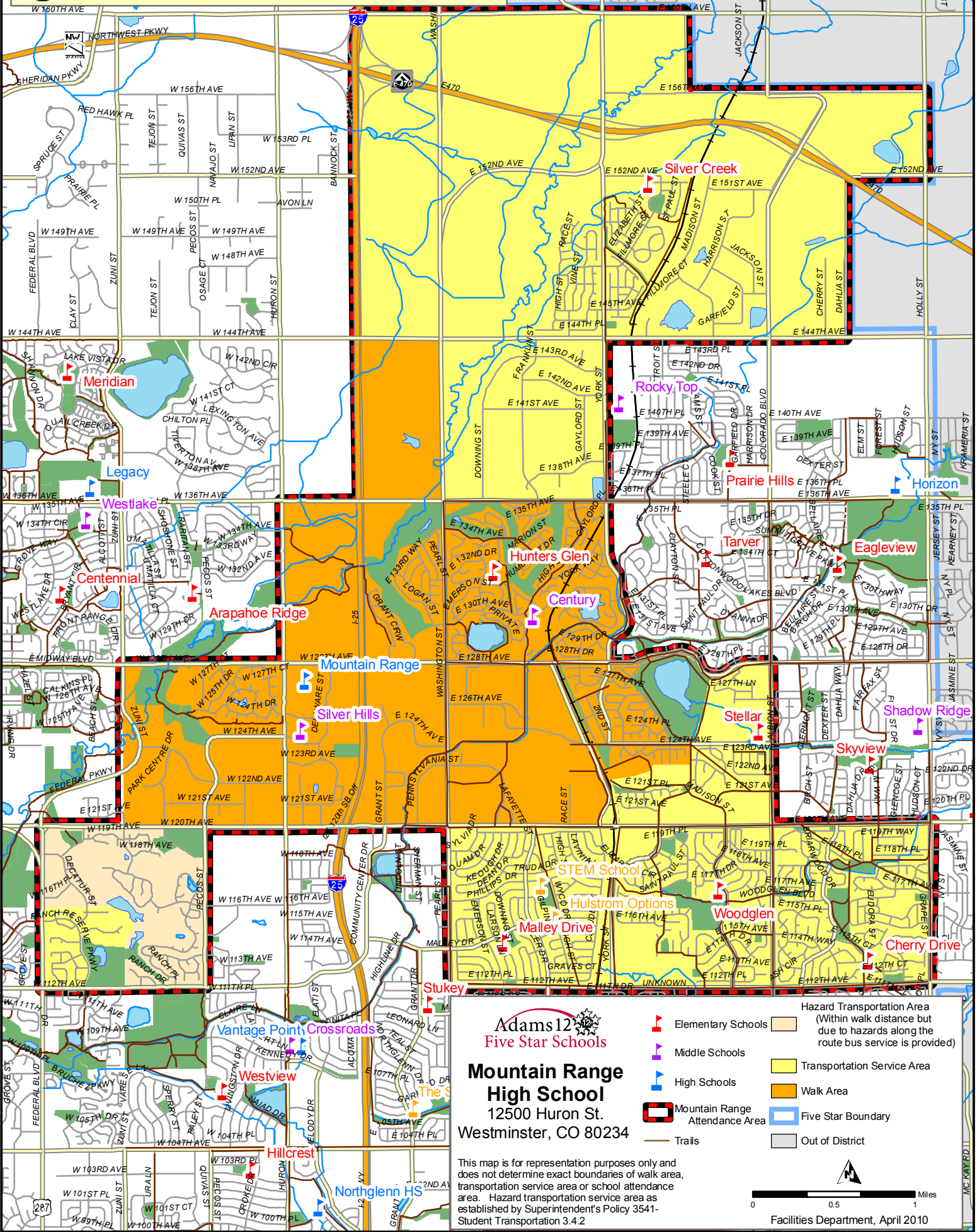




# Mountain Range High School Attendance Area

# New Walk Areas Effective Fall 2010



**Adams 12**  
**Five Star Schools**  
**Mountain Range High School**  
 12500 Huron St.  
 Westminster, CO 80234

This map is for representation purposes only and does not determine exact boundaries of walk area, transportation service area or school attendance area. Hazard transportation service area as established by Superintendent's Policy 3541-Student Transportation 3.4.2

