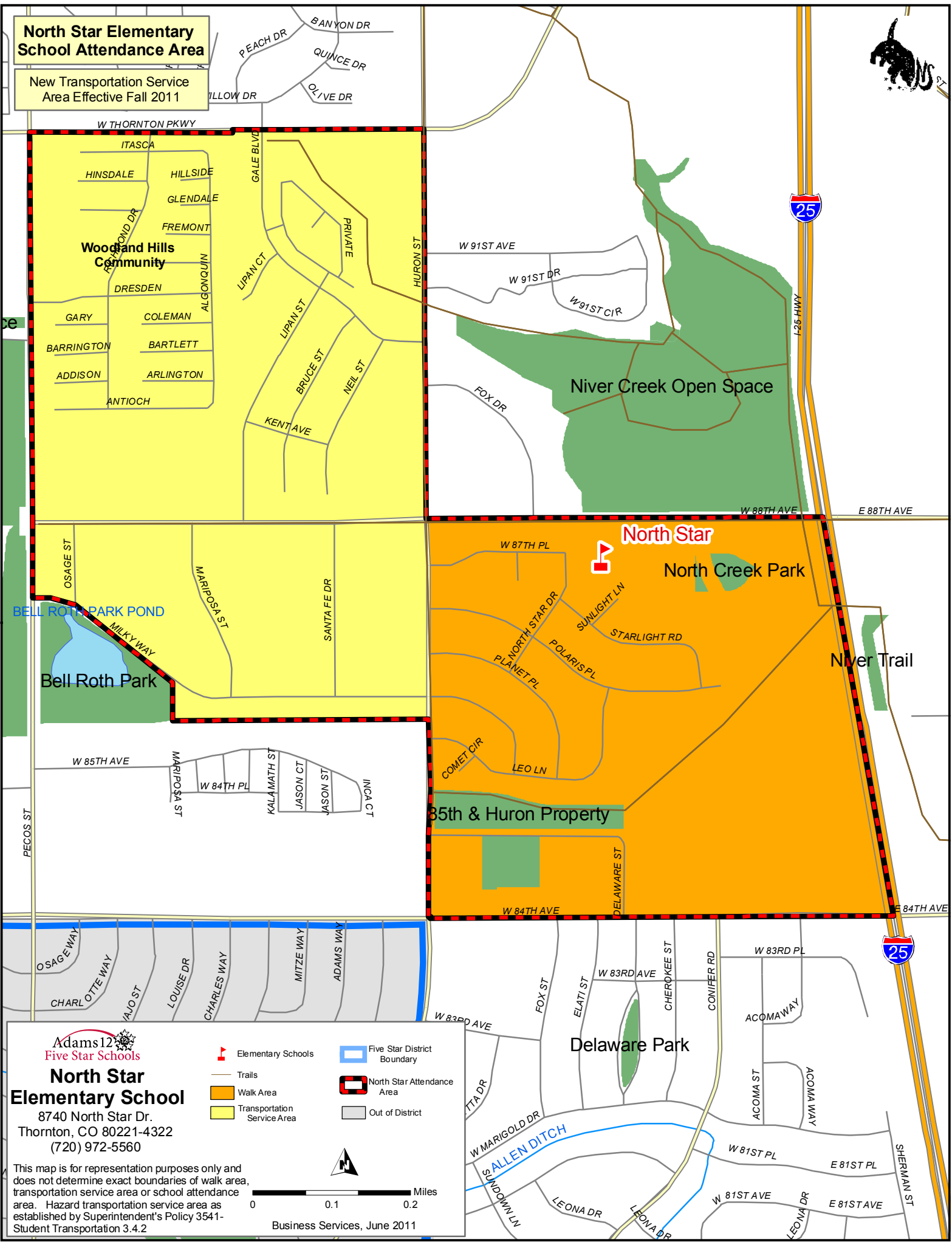


**North Star Elementary School Attendance Area**

New Transportation Service Area Effective Fall 2011



**Woodland Hills Community**

HINSDALE HILLSIDE  
 GLENDALE  
 FREMONT  
 DRESDEN  
 GARY COLEMAN  
 BARRINGTON BARTLETT  
 ADDISON ARLINGTON  
 ANTIOCH

Niver Creek Open Space

**North Star**

North Creek Park

Niver Trail

85th & Huron Property

Delaware Park

**Adams 12 Five Star Schools**  
**North Star Elementary School**  
 8740 North Star Dr.  
 Thornton, CO 80221-4322  
 (720) 972-5560

- Elementary Schools
- Five Star District Boundary
- Walk Area
- Transportation Service Area
- North Star Attendance Area
- Out of District

This map is for representation purposes only and does not determine exact boundaries of walk area, transportation service area or school attendance area. Hazard transportation service area as established by Superintendent's Policy 3541-Student Transportation 3.4.2

0 0.1 0.2 Miles

Business Services, June 2011