

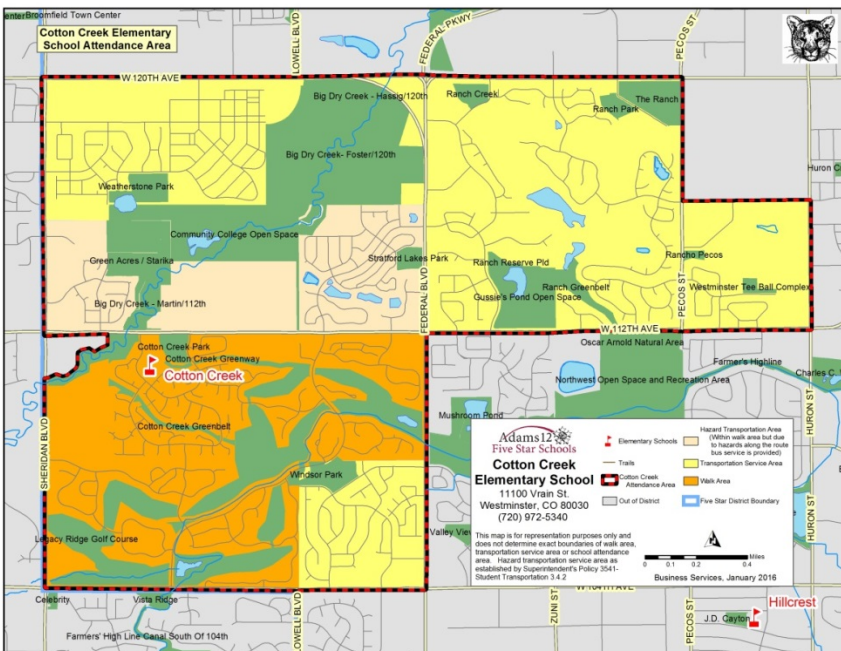
COTTON CREEK

POPULATION SHIFTS – TALKING POINTS

Background

- Year built - 1979
- Built as a 3-round school with half-day kindergarten
- Currently operating as a 4-round school with two full-day kindergarten and two half-day kindergarten programs.
 - Also has two center-based special needs programs: Significant Support Needs (SSN) for students with physical impairments and Structured Learning Services (SLS) for students on the autism spectrum.
- Boundary changes:
 - 1997 – Boundary was tweaked to accommodate growth north of 112th
 - 2015 – Relocated two pending apartment complexes from the boundary due to crowding at the school
- Two mobiles beginning in 1984 and a third added in 2007.
- Preschool was relocated in 2009 due to K-5 growing enrollment.
- SLS (Structured Learning Services-program for children on autism spectrum) program added in 2012 to serve growing autism population in the district.
- 2008 and 2014 bond plans included replacement of the current six mobile classrooms with an eight classroom addition. Location has not been determined as design work has not been funded.
- Long Range Planning Advisory Committee, Population Shifts Subcommittee is currently considering an addition to replace the existing mobiles and add two classrooms for the 2016 bond plan.

Current Boundaries



Capacity Model: Compared to 3- and 4-Round Schools

	CURRENT COTTON CREEK ROOM INVENTORY			Typical 3 Round School Inventory	Typical 4 Round School Inventory
	Building Clsrms	Mobile Clsrms	Total Clsrms	Total Clsrms	Total Clsrms
CLASSROOMS - K-5					
Kindergarten (half-day)	1		1	2	
Kindergarten (full-day)	2		2		4
Total Kindergarten	3		3		
1	5		5	3	4
2	4		4	3	4
3	4		4	3	4
4	0	4	4	3	4
5	4		4	3	4
Total K-5	20	4	24	17	24
OTHER - FLEXIBLE					
ESL (373-1)		1	1	1	1
OT (373-2)		1	1	0	0
ESL (L)	1		1	0	0
TOTAL - OTHER - FLEXIBLE	1	2	3	1	1
OTHER - PERMANENT USE					
SSN (H)	1		1	1	1
SLS (G)	1		1	1	1
TOTAL - OTHER - PERMANENT USE	2	0	2	2	2
OTHER - PERMANENT USE					
Art (J)	1		1	1	1
Computer Lab (K)	1		1	1	1
Music (22)	1		1	1	1
TOTAL - OTHER - PERMANENT USE	3	0	3	3	3
TOTAL BUILDING	26	6	32	23	30
NONCLASSROOM INSTRUCTIONAL SPACE	Building Rooms	Mobile Rooms	Total Nonclassrooms		
SSN Pullout (o)	1		1		
Instructional Coach Office (9)	1		1		
Psych (10)	1		1		
Bookroom (20-stage)	1		1		
BASE Ofc. (18B)	1		1		
PCD (Z)	1		1		
NONCLASSROOMS - TOTAL	6	0	6		