

A silhouette of a person standing in shallow water, casting a large, wide net into the ocean. The scene is set against a sunset sky with warm orange and yellow tones near the horizon, transitioning to a clear blue sky above. The water in the foreground is dark with gentle ripples, reflecting the light from the sky. The net is spread wide, creating a large, irregular shape against the sky.

Adams 12 GT Universal Screener

Casting a wide net to find hidden talent

The purpose of this presentation is to help parents understand the NNAT2 assessment given to their students in 2nd grade as part of Adams 12 Schools universal screening for gifted and talented identification.



A universal screener is the “systematic assessment of all students within a grade level of a district for identifying exceptional ability or potential...”

[from Colorado Revised Statute 22-20-103]

Rationale for a GT Universal Screener

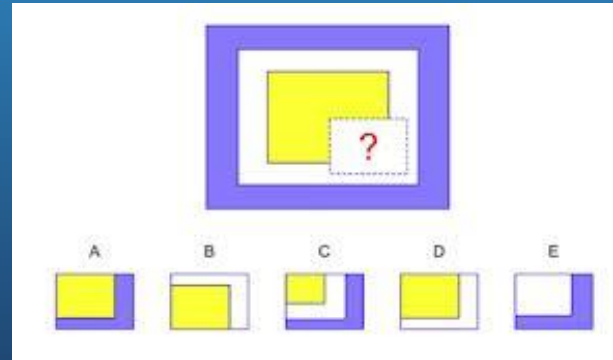
- Recommended in Colorado House Bill 1102 by end of 2nd grade
- Listed as a “next step” for Adams 12 in our CDE Gifted Education Review (C-GER)
 - Also outlined in Adams 12 Unified Improvement Plan (UIP)
- Considered a best practice by National Assn for Gifted Children
- Will help us more systemically identify hidden talent in AD12
 - Will address underrepresentation of GT students among certain populations

What is the NNAT2?



Naglieri Nonverbal Ability Test 2

- ❖ Measures *general* ability which indicates how well students can think regardless of their language or academic skills
- ❖ 30 minutes in length
- ❖ Multiple choice format
- ❖ Administered online
 - ❖ [View sample test](#)



What is ability?

- ❖ Ability is the foundation that allows us to learn regardless of what is being taught. General ability allows us to remember facts, work with information, and understand verbal and mathematical concepts. It is the foundation for the activities in our daily lives.
- ❖ It is *exceptional* ability or potential that we are looking for when we use the NNAT2 for gifted screening.



Ability vs. Achievement

Ability

- ❖ Indicates likely future performance
- ❖ Studying does not improve score
- ❖ General reasoning (verbal, nonverbal, quantitative)

Achievement

- ❖ Measures what you know or have studied in the past
- ❖ Studying can improve score
- ❖ Specific grade level content (Reading, Math, Science, etc.)

Why does my student need to take this test?

- ❖ The NNAT2 ensures that all students in Adams 12 are given the opportunity to demonstrate their abilities and receive proper supports for those abilities.
- ❖ Gifted and talented programming in your student's school provides high-ability learners with additional academic and social support.

What happens after my student takes the NNAT2?

Score reports will be available (in both English and Spanish) from your student's school.

- Scores near or above the 95th percentile may be used as criteria for possible gifted identification. These scores will be provided to the GT coordinator at your student's school.
- [Colorado Department of Education guidelines for gifted identification are multiple indicators at the 95th percentile]

The NNAT2 Home Report will look like the sample report below.



Home Report | Sample W Dlastname

SCHOOL : Demo School 2 - 10101-002
 DISTRICT : Demo District 1 - 10101

TEST DATE : 8/24/2010
 AGE : 8 YRS 6 MOS
 GRADE : 4 NNAT2 LEVEL : D

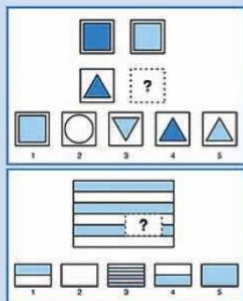
Purpose

The Naglieri Nonverbal Ability Test[®] - Second Edition is a brief nonverbal measure of general ability. The test questions are made of shapes and/or symbols. The instructions are straightforward and brief and can be given in different languages (e.g. Spanish). The NNAT2 measures ability fairly for students from many different cultural and linguistic backgrounds.

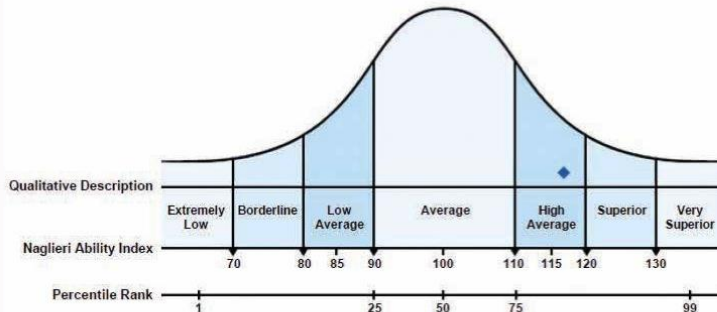
Intended Use

- As a nonverbal measure of general ability for students ages 5-17 or Grades K-12
- As a measure that evaluates ability for students from diverse populations who may use different languages or come from different cultures
- For the identification of gifted individuals, especially gifted students who come from culturally and linguistically diverse groups
- For the evaluation of students who are hearing impaired

Examples of Items



Your child was recently administered the Naglieri Nonverbal Ability Test[®] - Second Edition (NNAT2). This report contains an explanation of the NNAT2 and how your child performed.



117 NAGLIERI ABILITY INDEX

Your child's score has been placed on the graph to show how it relates to the scores of other students of the same age. Most children's scores will fall between 90 and 110. Scores in this range are considered to be average. Fewer children will have scores that fall between 70 to 89 and 111 to 130, and an extremely small number of children will have scores that fall below 70 or above 130. Use the Qualitative Description on the graph to help you understand where your child's score falls.

86 PERCENTILE RANK

Percentile Ranks range from a low of 1 to a high of 99. This score is used to compare your child's performance to that of a national sample of students of the same age. For example, if a child who is six years old has a Percentile Rank of 75, this means the student scored as well as or higher than 75 percent of six year old students who were tested. Please note that Percentile Rank and Percent Correct represent two different performance measurements and have different interpretations.

Understanding Percentile scores

- The majority of students will fall within the average range which is from the 25th percentile to the 75th percentile.
- Some students fall above or below the average range.
- For students who fall below the average range, it is important to consider school performance and seek teacher feedback in order to get a full picture of the student.

How can I prepare my student to take the NNAT2?

- ❖ The NNAT2 is a snapshot of your student's ability so they do not need to study for the NNAT2.
- ❖ You can help your student to prepare for taking the test by:
 - Making sure they get adequate rest
 - Providing them with a nutritious breakfast
 - Encouraging them to try their best

The NNAT2 is only one tool used for GT identification. There are multiple opportunities for students to demonstrate their need for gifted supports.

A silhouette of a person standing on a small boat or pier, holding a large, rectangular net that is spread out over the water. The scene is set against a bright, orange-red sunset sky. The water is calm, and the overall atmosphere is serene and contemplative. The person's shadow is cast on the surface they are standing on.

QUESTIONS?